

Barton Village Neighbourhood Plan

Questionnaire Autumn 2018

YOUR chance to have
YOUR say about the
FUTURE of
Barton Village

Dear Fellow Resident,

You may be aware of the Neighbourhood Plan for Barton Village, which was launched in November 2017.

The Plan is being drawn up by a Steering Committee of residents and others working with your Parish Councillors. However, the content is being driven by you and so it is vital that we ensure you have your say.

This questionnaire is the next step in the process of public consultation. We need to get as comprehensive a picture of views as possible, so there are plenty of open boxes throughout the questionnaire, giving you plenty of scope for raising anything that you think we have missed so far. We sincerely hope that you use this opportunity to engage with us and give us your thoughts and ideas.

Our Plan should support and compliment that of our lead planning authority – Preston City Council. It will help to guide any future development within the Parish, as well as helping to protect important green spaces and other things we care about.

We are distributing one paper copy per household and we hope they will all be returned to us completed. The questionnaire can be completed by a resident or person working in the village, aged 16 or over and we particularly encourage young people to get engaged – it's their future too. If you require extra copies you can download and print them from the website:

www.Bartonvillageneighbourhoodplan.org,

In sections of this document there is reference to “the website” – this is always the site: www.Bartonvillageneighbourhoodplan.org. There is a section on there “Guidance on the Questionnaire” which gives additional details and notes, as appropriate.

You **must** enter your **postcode**. This will enable us to analyse the data from the forms more meaningfully and detect any more specific localised issues.

We strongly recommend you read the whole questionnaire first, before starting to fill it in. Please complete your questionnaire and put it in the **attached envelope**.

If you require any assistance completing this form please contact us at www.Bartonvillageneighbourhoodplan.org or please contact the Chairman of the Steering Group, John Parker, Tel. 01772 933241.

Please return your completed questionnaire by the 30th September 2018, to any of the following venues:

- The Village Hall
- Barton St Lawrence C of E School
- Barton St Mary Newhouse School
- 802 Garstang Road, Barton (Chairman of the Parish Council)
- 19 Woodlands Way, Barton (Vice Chairman of the Parish Council)
- Barton Chippy, Garstang Road, Barton

2. General Information

- 2.1. Do you live in Barton? *(circle or delete, as appropriate)* Yes/No
- 2.2. Do you work in Barton? *(circle or delete, as appropriate)* Yes/No
- 2.3. Please provide your **postcode**
(that of your **workplace** if you work,
but are not resident, in the village):

Note: questionnaires without a postcode can't be considered – we need this information to be able to group any particular issues to areas within the Parish.

- 2.4. What is the number of people in your household?

- 2.5. What age range do you fall within?

- a) 16-30
- b) 31-50
- c) 51-70
- d) 70+

3. About Our Community

What do you feel are the assets, strengths or positive features of our community? Please tick all the ones that are **important to you**.

- | 3.1. Feature | Tick? |
|--|-------|
| a) Open and green spaces | |
| b) The rural character of our parish | |
| c) Local wildlife and habitats | |
| d) Sense of community | |
| e) Friendly and safe environment | |
| f) The schools | |
| g) The churches | |
| h) Access to the countryside | |
| i) Access to the Motorway network | |
| j) Something else? Please tell us below. <i>(Please feel free to continue at the back of the survey)</i> | |

3. About Our Community

What do you feel are the weaknesses or negative features of our community? Please tick all the things that **most concern you**.

3.2.	Issue	Tick?
a)	Pedestrian safety and lack of crossing points	
b)	Car parking	
c)	Volume of traffic	
d)	Speed of traffic	
e)	Litter	
f)	Dog fouling	
g)	Excessive or inappropriate signage	
h)	Lack of a convenience store	
i)	Lack of medical provision	
j)	Lack of public green space	
k)	Lack of additional sport facilities	
l)	Lack of sheltered accommodation	
m)	Wider transportation options	
n)	Lack of Allotments	
o)	Something else? Please tell us below. <i>(Please feel free to continue at the back of the survey)</i>	

4. About Homes

This is possibly one of the most important sections of this questionnaire. We need to get a comprehensive understanding of your views on any new development.

There are a number of sites earmarked in the Preston City & Wyre Council areas for development within Barton. The parish council has objected to many planning applications over the past three years in our village, but current policy has meant it can be difficult to influence the decisions that are made.

We need to get a good understanding of your wants and needs, in order to be able to better influence planning decisions.

Firstly, whether you think any development is required at all:

	Strongly Agree	Agree	Disagree	Strongly Disagree
4.1. There is a need for new homes in Barton				

If a case is made for more development – we need to gain an understanding of what type you would be most in favour of seeing – please complete irrespective of your response to the previous question:

4.2. If new homes are to be provided, I would prefer the following property types:	Strongly Agree	Agree	Disagree	Strongly Disagree
a) Affordable** homes with a local connection				
b) Smaller homes or apartments (1 or 2 bed) to rent				
c) Medium homes (3 bed) to rent				
d) Larger homes (4 plus bed) to rent				
e) Bungalows to rent				
f) Retirement or extra care housing				
g) Care homes				
h) Smaller homes or apartments to buy (1 or 2 bed)				
i) Medium homes (3 bed) to buy				
j) Larger homes (4 + bedrooms) to buy				
k) Bungalows to buy				
l) Self- build plots				

** Affordable Housing is a term often used, but many of us don't fully understand what it means. We have put a detailed description of what it means, in Preston on our website – it is well worth reading.

4. About Homes

If there is to be more development – we want to know what types of development site you would be more in favour of:

4.3.	If new homes are to be provided, the following development types are most appropriate:	Strongly Agree	Agree	Disagree	Strongly Disagree
a)	One or two dwellings, filling gaps between houses in existing built up areas				
b)	A range of small scale developments of 4-9 units				
c)	Medium scale developments of 10 - 20 units				
d)	Larger scale developments of over 20 units.				
e)	A combination of the above				
f)	All developments concentrated on one site				
g)	Any other comments?				

Establishing how and where any development should be located:

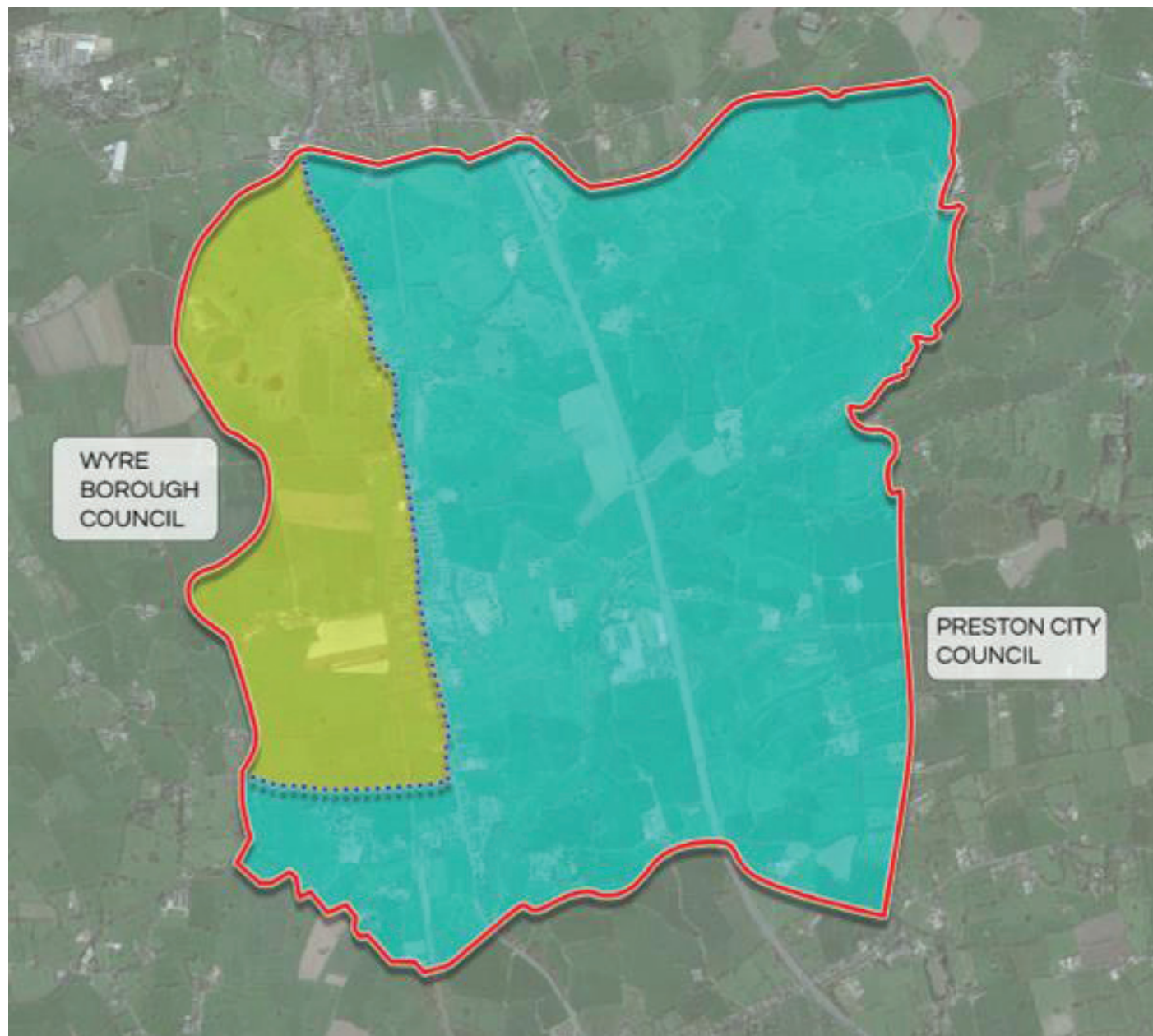
4.4.	These types of location would be acceptable for development:	Strongly Agree	Agree	Disagree	Strongly Disagree
a)	On sites within Barton Parish settlement boundary (see attached map)				
b)	On greenfield sites outside the existing boundary				
c)	On brownfield sites **				
d)	By conversion of agricultural buildings				
e)	By conversion of existing properties into apartments				
f)	In gardens of existing properties				
g)	Any other comments?				

** A brownfield site is defined as “previously developed land” – so had commercial or residential property built on it.

4. About Homes

Please see the attached maps –

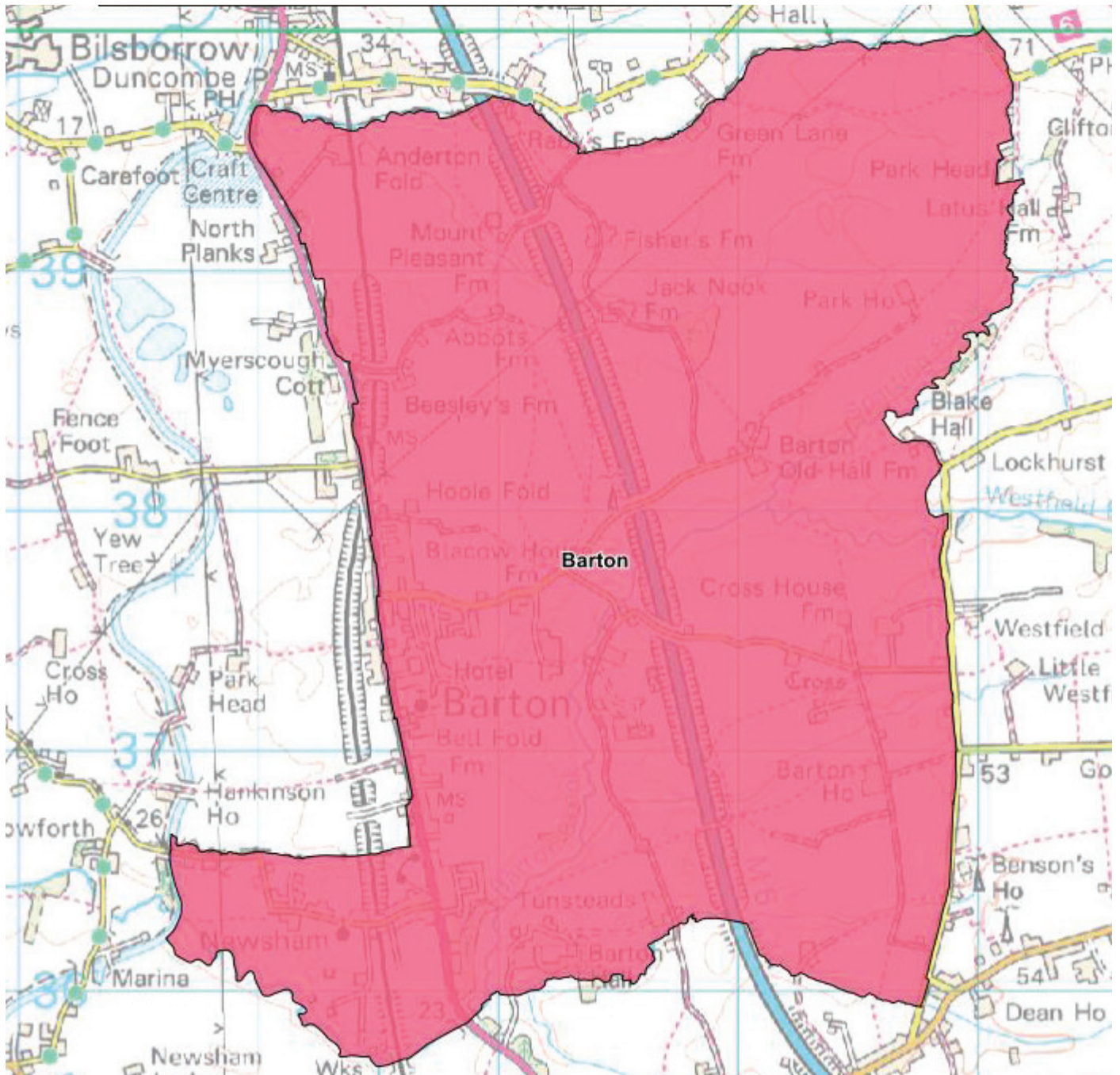
1. Shows the whole Parish, which is divided between Preston & Wyre Councils.
2. Shows the Parish in more detail which is under Preston City Council Control.



Map 1

4. About Homes

Please **mark on the below** map any locations you would consider acceptable for development - indicate up to five areas and mark each clearly "DEVELOP"



Map 2

4. About Homes

- 4.5. Are there any particular areas that you would want to see protected from development?
Give any general comment here:

Please again see the above Map 2 - showing the Administrative Boundary of the lead authority Preston City Council and the Parish. Please **mark on the map** any locations you most specifically want to see protected from any development - indicate up to five areas and mark each clearly "PROTECT"

If new properties are to be built in the village – there may be features or standards that you care particularly about – indicate them here:

4.6. These principles should influence the design of new houses:	Strongly Agree	Agree	Disagree	Strongly Disagree
a) Have enough off-street parking				
b) Have a variety of architectural designs				
c) Be limited to 2 or 2.5 storeys				
d) Have a garden				
e) Have defined pavements on both sides of the road and provide good pedestrian access to local facilities				
f) Any other comments?				

Being more in harmony with nature:	Strongly Agree	Agree	Disagree	Strongly Disagree
4.7. New homes should incorporate any recognised ecological features, e.g. swift bricks				

5. About Roads and General Highway Safety

As a resident or worker in the village would you support a change to the speed limits currently enforced?

5.1. Speeding in this area is unacceptable:	Strongly Agree	Agree	Disagree	Strongly Disagree
a) A6				
b) Station Lane				
c) Jepps Lane				
d) Anywhere else please name the road(s) here:-				

5. About Roads and General Highway Safety

5.2.	Speed Limit Reduction:	30 mph	20 mph
a)	A6		
b)	Station Lane		
c)	Jepps Lane		
d)	Anywhere else please name the road(s) here:-		

Evaluating measures to tackle speeding:

5.3.	The following measures should be considered:	Strongly Agree	Agree	Disagree	Strongly Disagree
a)	More speed cameras				
b)	Use of "Community Speed Watch" – using volunteers to record and report speeding				
c)	Other Traffic Furniture e.g. (Narrow Lanes / speed bumps / Pelican Crossings)				
d)	Any other suggestions:-				

5.4. If you or a family member have any mobility issues or push a pram through the village do you feel that there are problems due to narrow footways or any other safety concerns? If so please tell us about them below: -

There have in the past been suggestions of needing additional pedestrian crossing(s)/refuge island(s) (i.e. a raised pavement between two lines of traffic moving in opposite directions) in the village:

	Strongly Agree	Agree	Disagree	Strongly Disagree
5.5.	We need additional crossing(s) / refuge island(s) in the Village			
5.6.	If you indicated "Strongly Agree" or "Agree" – where in particular do you think they are needed most?			

5. About Roads and General Highway Safety

- 5.7. Inconsiderate parking has been known to be an issue in Barton. What measures do you think we should seriously consider making formal enquiries, about to address these problems? For example, double yellow lines, resident only parking permits, etc. Please say where and what type of measures you would like to see.

6. About Transport

We want to gain an understanding of the most commonly used forms of transport – and the extent of their use.

Adults first:

6.1. Indicate the level of your personal use of each of the following modes of transport:	Never	Rarely	Sometimes	Often
a) Motor vehicle (car, van, etc)				
b) Bus				
c) Bicycle				
d) Motorbike				
e) Wheelchair (motorised or unpowered)				
f) Walking				

Under 16s next:

6.2. Indicate the level of your personal use of each of the following modes of transport:	Never	Rarely	Sometimes	Often
a) Motor vehicle (car, van, etc)				
b) Bus				
c) Bicycle				
d) Motorbike				
e) Wheelchair (motorised or unpowered)				
f) Walking				

- 6.3. How many motor vehicles do you have at your house (including vans, motor homes, etc?)

- 6.4. What would encourage you to use public transport, cycle or walk more? Please also say how cycle ways in Barton could be improved?

6. About Transport

	Strongly Agree	Agree	Disagree	Strongly Disagree
6.5. Would you like to see new cycle ways through the village from A to B?				
Could we create a "Barton Wheel" allowing for safe transit around the village for families?				

Use of Public Rights of Way (PROWs). These are not pavements or other general footpaths, but legally defined Rights of Way. For more details of just what a PROW is and how to find out where they are – see the website.

	Never	Rarely	Sometimes	Often
6.6. Do you use any PROW's in or around Barton?				
6.7. Are there any areas or issues for improvement to PROWs that you would like to tell us about? Please list them below :-				

7. Utilities

Although we have no direct influence over the services provided in Barton, we would like you to complete the following sections, as it may help us support you to access better services for our village.

Mobile phone and broadband:

	Strongly Agree	Agree	Disagree	Strongly Disagree
7.1. Mobile phone signal where I live is poor				
7.2. Broadband speed availability where I live is poor				

Sewage and drainage services provision:

	Strongly Agree	Agree	Disagree	Strongly Disagree
7.3. Sewage/drainage is of a concern for me where I live.				
7.4. Please elaborate, if you have any concerns:				

8. About Employment and Business

There are a few well-known businesses in the village. However – there are very many small businesses, or self-employed people located in Barton – which most of us know little about.

- 8.1. Do you have any suggestions for creating employment opportunities in the village?
Please list them here:

- | | |
|--|--------|
| 8.2. Do you think the village would benefit from having a (probably on-line) local tradesman/business directory available? <i>(circle or delete, as appropriate)</i> | Yes/No |
|--|--------|

	Strongly Agree	Agree	Disagree	Strongly Disagree
8.3. Barton would benefit from more commercial units/industry in the village to create more employment?				

	Strongly Agree	Agree	Disagree	Strongly Disagree
8.4. Retail facilities in our village are currently adequate				

- 8.5. If you indicated “Disagree” or “Strongly Disagree” above, what other types of retail facility would you support?

9. About Health and Wellbeing, Community and Social

We want here to get an understanding of how happy residents are with the health and community services that are available – if there are additional provisions that would be welcome and whether or not you would be prepared to **get involved**. Currently there is only a small provision of retail on the west side of the A6 and no provision for a medical facilities such as a health centre or pharmacy.

	Strongly Agree	Agree	Disagree	Strongly Disagree
9.1. National Health Service (NHS) facilities within the area are satisfactory				

- 9.2. If you indicated “Disagree” or “Strongly Disagree” above, what other NHS facilities would you support in our village?

9. About Health and Wellbeing, Community and Social

9.3.	Which G.P. are you currently registered with?	(Please tick)
a)	Garstang	
b)	Fulwood	
c)	Other (please say where)	

	a)	1-5	b)	5-10	c)	10+
9.4.	How often do you visit a G.P. practice/surgery in one calendar year? (Please tick)					

	Yes	No
9.5.	Would you join a G.P. practice in the Barton area?	

9.6.	If so, why?

9.7.	What facilities do you use for exercise and wellbeing in our village?

9.8.	Please list any additional services you would support.

9.9.	Are there any additional sports facilities you would like to see in our village? Please list them here.

9. About Health and Wellbeing, Community and Social

9.10. Are there any additional youth facilities/events that you would **actively** support in our village? Please list them here and please supply your contact details at the end so we can get in touch about this.

9.11. Are you a member of any clubs or societies in the village? If so please list them here:

9.12. If you are interested in getting involved in any existing clubs or societies, please list them here and give your contact details at the end and we will pass them on to the relevant club/society organiser.

9.13. Are there any additional groups, clubs or societies you would wish to see established? If so, please list them here and give your contact details at the end, so we can gather together any groups with similar interests.

10. About Safety and Security

We are interested in identifying any particular concerns on safety matters and gathering views on ways to address these.

	Strongly Agree	Agree	Disagree	Strongly Disagree
10.1. Barton is a safe place to live				
10.2. If you indicated "Disagree" or "Strongly Disagree" above, what additional safety measures would you wish to see in the Village?				
10.3. If you indicated "Strongly Agree" or "Agree" – what about Barton makes you feel safe?				

	Strongly Agree	Agree	Disagree	Strongly Disagree
10.4. Policing services in our Village are adequate				
10.5. If you indicated "Disagree" or "Strongly Disagree" above, what particularly concerns you?				
10.6. What are your general comments about safety and security in Barton?				

11. About Ecology, Heritage and Community Assets

Barton has a number of assets – but how highly do you value them? Your responses here will be useful in gaining views on what really matters to people.

11.1. The following public, heritage and community assets are important to the identity of Barton:	Strongly Agree	Agree	Disagree	Strongly Disagree
a) King George V Playing Fields				
b) Village Hall				
c) Horse memorial				
d) Barton Cross				
e) Bowling Club				
f) Tennis Club				
g) Boars Head Inn				
h) St Lawrence				
i) St Mary Newhouse				
j) Barton Old School House				
k) Bridges over Lancaster Canal				
l) War memorial (St Lawrence's grave yard)				
m) Barton Grange Hotel				
n) The Sparlings				
o) Barton Chippy				
p) Barton Bangla Brasserie				
q) Other, please state:-				

Note: Main War memorial (Located in Bilsborrow)

11.2. The following open green spaces in the village are important to the identity of Barton:	Strongly Agree	Agree	Disagree	Strongly Disagree
a) King George V Playing Fields				
b) Open space between off Jepps Avenue (area were road splits)				
c) Open space, behind Village Hall				
d) Open space, Forest Grove				
e) Any other green spaces within the Settlement Boundary, of particular importance to you please state here:-				

11. About Ecology, Heritage and Community Assets

	Strongly Agree	Agree	Disagree	Strongly Disagree
11.3. Can Barton create nature features near the Village Hall or King George V Playing Fields (bug hotel, pond, wildflower meadow and willow weaving) are valuable attributes.				

11.4. Would you like to see an active approach taken to nature features in the village?
If so please say where below.

11.5. Do you have any other comments?
Please tell us below – you can add additional pages if you need to:-

Additional Comments

12. Thank You – and Contact Details



Many thanks for taking the considerable time required to read and complete this questionnaire. We really appreciate that you care about our village as much as we do – and want to contribute towards its positive future.

Should you require assistance in completing the questionnaire, then please contact the Chairman of the Steering Group, John Parker, on 01772 933241 and I will endeavour to help.

If you have indicated that you are interested in new or existing groups, or in establishing additional facilities for teenagers, then you will need to give your contact details below:

Alternatively, if you want to be included in our “Thank You” prize draw completion, with a chance to win these lovely prizes kindly donated by Barton Grange’s fabulous new complex ‘The Flower Bowl’.

1. Meal for 2 in The Ocean fish and chips
2. 4 player round of crazy golf
3. 2 player round of crazy golf

Please complete your details below then give your contact details below:

Name:	
Address / email address :	
Phone number	

**Please remember,
completed questionnaires
to be handed in by
30th September 2018**

